



FAITH LYNCH

**MODE RADICALE:
NÉOROMANTIQUE**

Photographie Daniyel Lowden

Réalisation Marine Braunschvig

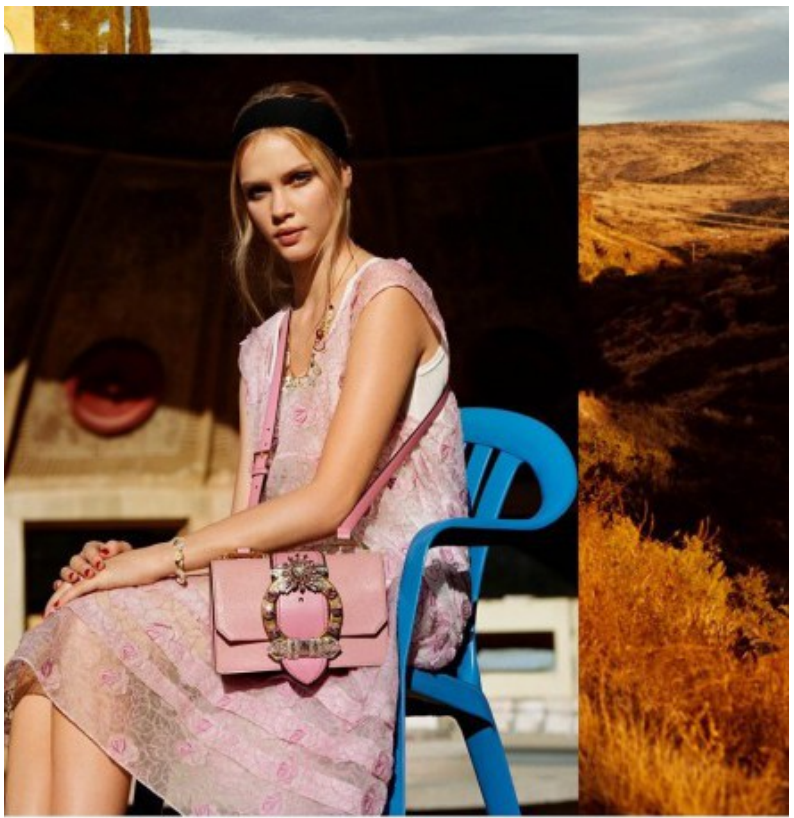
Collure Caroline Bataini
Maquillage Aurélie Delprat
Assistant photo James Scuffie
Assistante styliste Damise Sevidon
et Solène Dupuis



THE NEW FRAGRANCE

DAISY LOVE

MARC JACOBS



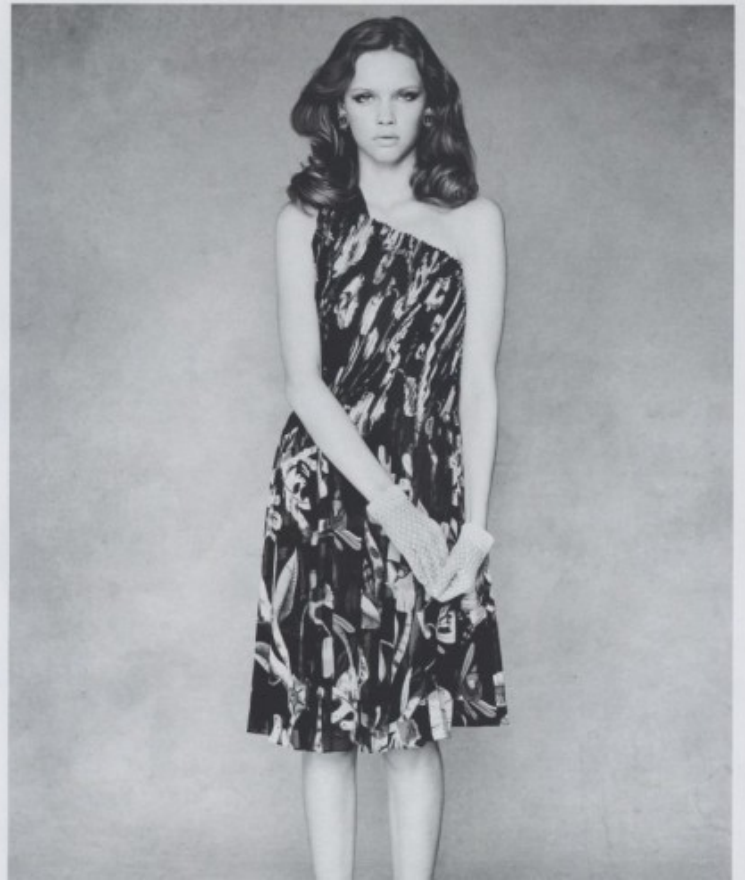
יוו יוו



R1 Management

Contacta
info@r1-mgmt.com

Llámanos
+34.93.492.57.23



R1 Management

Contacta
info@r1-mgmt.com

Llámanos
+34.93.492.57.23



R1 Management

Contacta
info@r1-mgmt.com

Llámanos
+34.93.492.57.23



R1 Management

Contacta
info@r1-mgmt.com

Llámanos
+34.93.492.57.23